



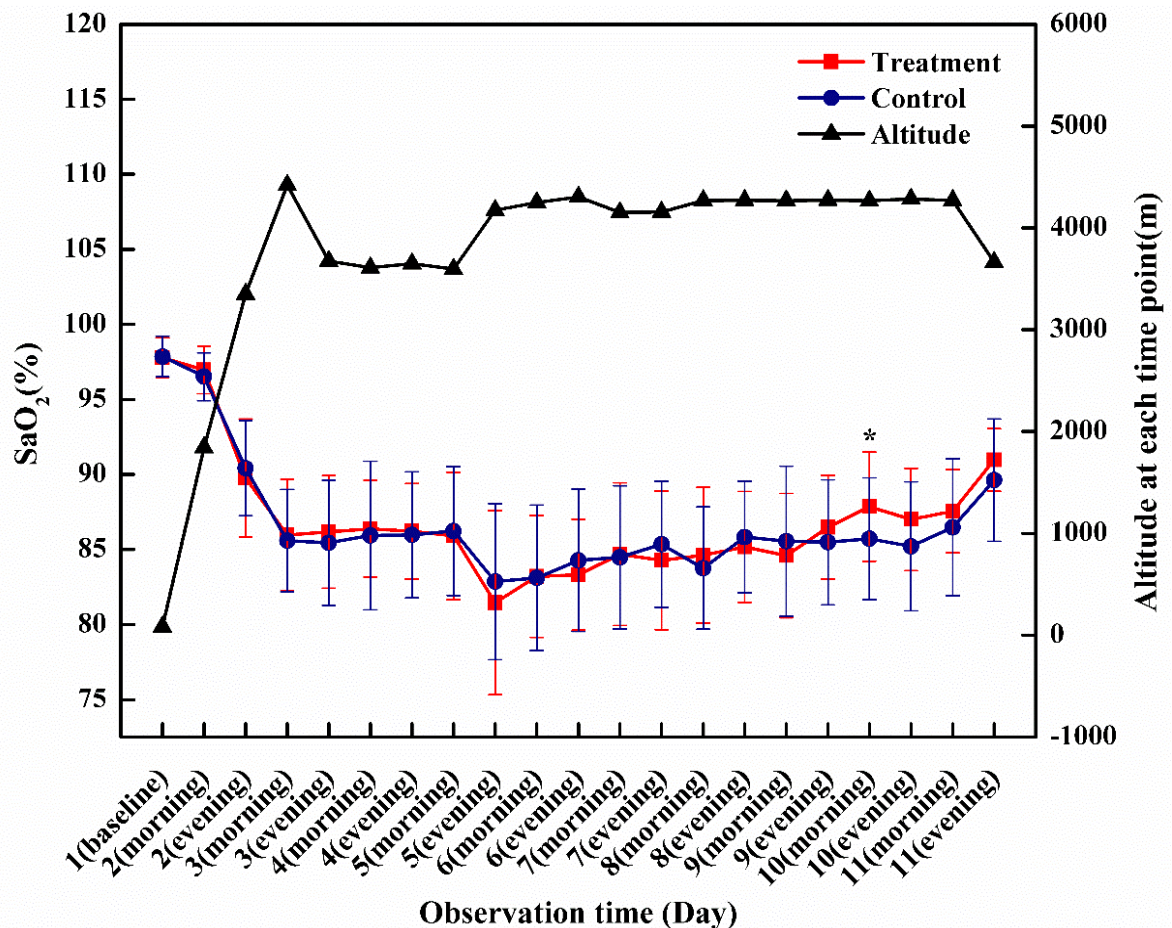
## Supplementary Material

# Efficacy of Danshen (*Salvia miltiorrhiza*) Dripping Pills for Prevention of Acute Mountain Sickness: A Randomized, Double-Blind, Placebo-Controlled Trial

Kui Li<sup>1</sup>, Lijun Li<sup>1</sup>, Jialun Fu<sup>2</sup>, Yi He<sup>2</sup>, Zhaohui Song<sup>2</sup>, Shuiping Zhou<sup>2</sup>, Luobu Gesang<sup>1\*</sup> and Rui Liu<sup>2\*</sup>

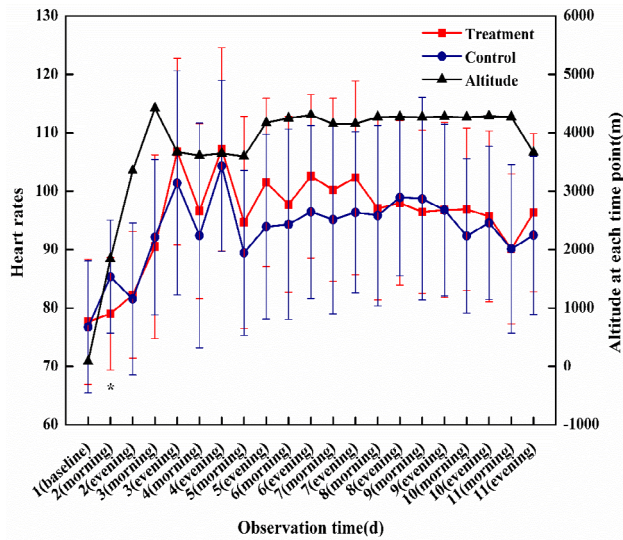
<sup>1</sup>Tibet Autonomous Region People's Hospital, Tibet, China

<sup>2</sup>Tasly Pharmaceutical Group Company Limited, Tianjin, China

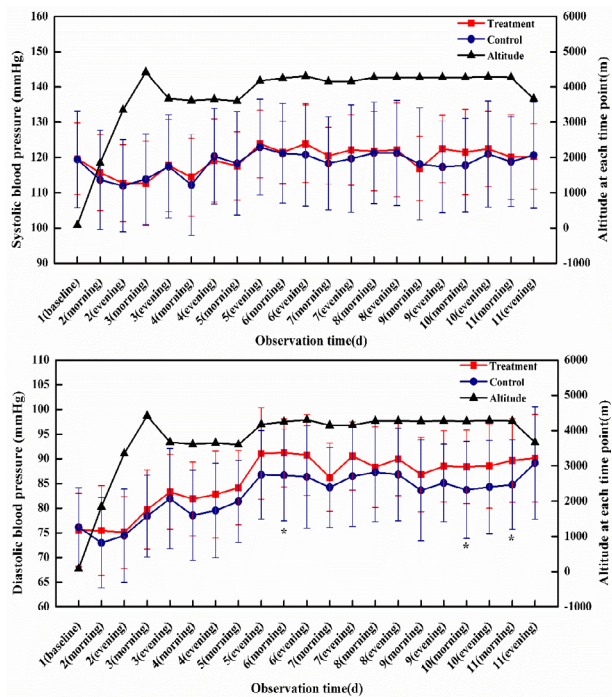


Supplementary Fig. S1. SaO<sub>2</sub> for subjects taking CDDPs or placebos at each time point. The asterisk indicates  $p < 0.05$  between the treatment and CON groups at that observation time.

\* Corresponding author: [dr.licorrespond@gmail.com](mailto:dr.licorrespond@gmail.com);  
[dr.licorrespond@gmail.com](mailto:dr.licorrespond@gmail.com)  
0030-9923/2020/0006-2215 \$ 9.00/0  
Copyright 2020 Zoological Society of Pakistan



Supplementary Fig. S2. Heart rates of subjects taking CDDPs or placebos at each time point. The asterisk indicates  $p < 0.05$  between the treatment and CON groups at that observation time.



Supplementary Fig. S3. Blood pressures of subjects taking CDDPs or the placebo at each time point. (a) Systolic blood pressure (mmHg). (b) Diastolic blood pressure (mmHg). Asterisks indicate  $p < 0.05$  between the treatment and CON groups at that observation time.

Supplementary Table S1. Kaplan-Meier estimation of the AMS incidence at each time point.

Item	Treatment group (N = 29)	CON group (N = 29)
Incidence time (d) (Log-Rank test=0.00, P = 0.9479)		
1	0.00(.,.)	0.00(.,.)
2	0.00(.,.)	3.45(0.49,22.05)
3	13.79(5.41,32.69)	17.24(7.57,36.57)
4	24.14(12.31,44.06)	20.69(9.87,40.36)
5	24.14(12.31,44.06)	27.59(14.87,47.66)
6	24.14(12.31,44.06)	27.59(14.87,47.66)
7	24.14(12.31,44.06)	27.59(14.87,47.66)
8	27.59(14.87,47.66)	27.59(14.87,47.66)
25% survival (95%CI)	8.00(3.00,.)	5.00(3.00,.)
50% survival (95%CI)	.(.,.)	.(.,.)
75% survival (95%CI)	.(.,.)	.(.,.)
Censoring rate (%)	72.41	72.41